

# Mighty Tieton Properties



## Available Mighty Tieton properties

Starting in 2005, we bought buildings and properties in Tieton. Our plan was to develop some and hold onto others, and eventually sell or lease a few of them to creative professionals interested in making good things happen in Tieton.

Now that we have established our businesses, and know which spaces make sense for them, it's time to attract enterprises.

We have one loft, several storefronts on the square, a few lots, a small house, sections of the Mighty Tieton Warehouse, and larger parcels suitable for development. This year, we will solicit proposals from potential buyers or lessees.

What sorts of creative businesses are we hoping to attract? Destination café, tavern, specialty foods, publishing, design, architectural services, destination retail, commercial kitchen, paper making, screen printing, furniture design, prototyping, art conservation, wine, microbrew, recreation, light manufacturing, craft production, weaving, events, community development, sustainable agriculture, warehousing and fulfillment, artist housing development, retirement services, concrete casting, hospitality, language instruction, retreat development, art studios and spaces, metalwork, performance space, architectural ornament, green technologies, and recreation.

Contact Ed Marquand for further details or to schedule a tour.  
[edm@marquand.com](mailto:edm@marquand.com)

206 321-2982

Additional photos are posted in sets by property on  
[flickr.com/ed\\_tieton](https://www.flickr.com/photos/ed_tieton/)

[mightytieton.com](http://mightytieton.com)

# Mighty Tieton Properties



Contact Ed Marquand for further details or to schedule a tour.  
 edm@marquand.com 206 321-2982

Additional photos are posted in sets by property on [flickr.com/ed\\_tieton](https://www.flickr.com/photos/ed_tieton/)

# Galería Dos



**When we bought Galería Dos it contained two apartments and a furniture repair shop.** It's currently unoccupied. Throughout its life its been a post office, a grocery store, and living spaces. It needs a lot of work, or a complete redesign and build.

Its best feature is it's location on the primary intersection in Tieton, across from Vickie's Tieton Café and Galería Uno. It's kitty corner from Tieton City Park.

It adjoins the Maple Street Lot and the Small White House, and we would consider combining them for a larger development property. This site could be developed into multi-family and/or artist housing, an inn, live-work studios, retail, professional offices, or hospitality business.

The price for this building is \$100,000.

Contact Ed Marquand for further details or to schedule a tour.  
edm@marquand.com

206 321-2982

Additional photos are posted in sets by property on  
[flickr.com/ed\\_tieton](https://www.flickr.com/photos/ed_tieton/)

[mightytieton.com](https://www.mightytieton.com)

# Harvest Hall



**Harvest Hall was a church.** We remodeled it in 2007, and it's been an event venue, great place for seminars, classes, workshops, and family events. We added an fully accessible restroom to the two small original restrooms. The large serving kitchen is new, as is the large deck and side doors. It has a small upstairs office. The air conditioning system was recently replaced. Approximately 25-30 parking spaces.

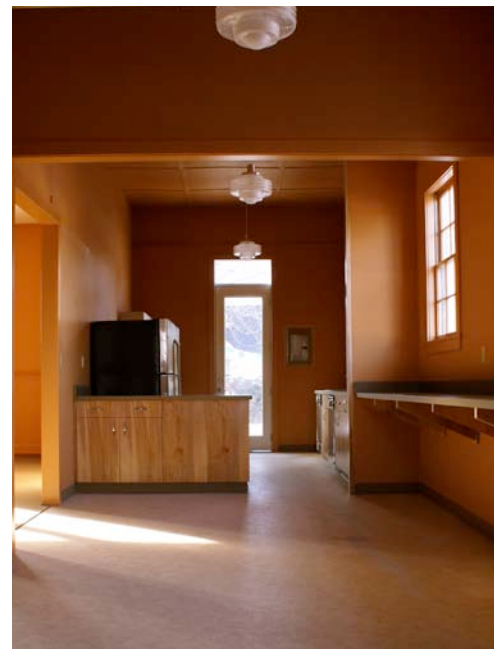
Harvest Hall could continue as an event center, or it could become a destination restaurant or tavern. It could even be turned into a large live/work studio.

The price for this building is \$249,500.

Contact Ed Marquand for further details or to schedule a tour.  
[edm@marquand.com](mailto:edm@marquand.com)

206 321-2982

Additional photos are posted in sets by property on  
[flickr.com/ed\\_tieton](https://www.flickr.com/photos/ed_tieton/)



[mightytieton.com](http://mightytieton.com)

# White House and Maple Street Lot

**This small, one bedroom house is recessed behind Galeria Dos and has plenty of potential.** With big windows on all sides, It's a bright house. with a good size kitchen and laundry. It requires work to make it comfortable. The Maple Street lot comes with city irrigation water.

The price for this house is \$89,500. The Maple Street lot is \$34,500. Sold together, the combined price is \$124,500.

Contact Ed Marquand for further details or to schedule a tour.  
edm@marquand.com

206 321-2982

Additional photos are posted in sets by property on  
[flickr.com/ed\\_tieton](https://www.flickr.com/photos/ed_tieton/)

# Rosenkrantz Lot



This one acre corner lot is just outside of downtown, but has city water and nearly one share of irrigation water. Nice views of Clemans Mountain, and acreage to the north.

The price for this property is \$49,500.



Contact Ed Marquand for further details or to schedule a tour.  
[edm@marquand.com](mailto:edm@marquand.com)

206 321-2982

Additional photos are posted in sets by property on  
[flickr.com/ed\\_tieton](https://www.flickr.com/photos/ed_tieton/)

# Mighty Tieton Loft #7



This loft faces the garden and Clemans Mountain and gets morning light from east facing windows. The ceilings are 14 feet high upstairs and 11 feet downstairs, with the original ceilings and beams exposed.

The downstairs features a large dressing room and bedroom, also with natural daylight.

The sleeping loft includes a custom-designed staircase and railing.

**Tieton Lofts are for creative professionals.** Join the group that has made it their community is smart, resourceful, entrepreneurial, artistic, and imaginative. Most residents use the Lofts as a second home. For others, it's a primary one, within easy commuting distance from Yakima.

Loft residents are the heart of the whole Mighty Tieton enterprise. They include serious recreational enthusiasts who take advantage of nearby skiing, hiking, biking, fishing, kayaking, birding, and kiting. They enjoy proximity to nature without the worry or hassle of a remote cabin or unattended house. Mighty Tieton works with the Nature Conservancy and Cowiche Canyon Conservancy to encourage smart use of local recreational resources.

Designed by Arellano/Christofides Architects from a 1940s apple warehouse and built by local custom-home contractors in 2007, this simple masonry building with high ceilings on two floors features exposed massive beams, and original wood floors on the main level. Developed to respect the aesthetics of the region, this project is smart, original, and responsive to the creative needs of the owners.

608 Wisconsin Avenue  
Tieton, WA 98947  
Approximately 1440 sq. ft. live/work area  
in two stories  
plus a 200 sq. ft. sleeping loft

**For sale by owner. \$249,500**

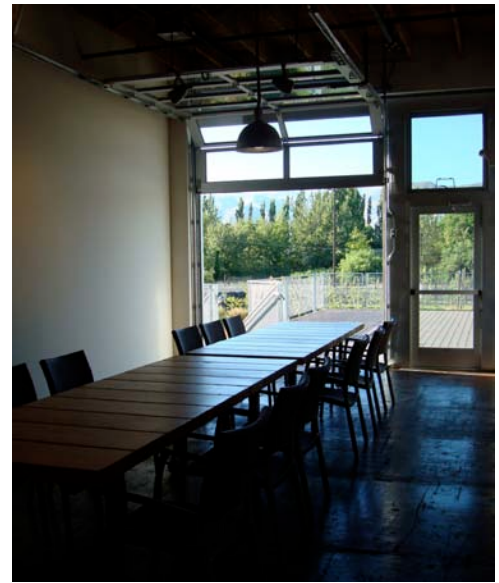
Contact Ed Marquand for further details or  
to schedule a tour.  
edm@marquand.com 206 321-2982.

Additional photos are posted in sets by  
property on [flickr.com/ed\\_tieton](https://www.flickr.com/photos/ed_tieton/)

[mightytieton.com](http://mightytieton.com)



Garden



Shared Gallery and Deck

Design features include venting skylight, full appliances, custom cabinetry, large state-of-the-art glass doors that open to the garden view, fully wired for data and speakers, wi-fi, and cable. Fire sprinkler system throughout. It's energy efficient. Electric forced air heating. The extra insulation on the roof and in the building itself keeps the voluminous spaces comfortable year around without air conditioning. Softened water. Tiled shower with terrazzo floor. Bosch washer/dryer.

Common spaces include a large deck overlooking the garden and orchard, the Gallery space for planned and spontaneous potlucks, holiday dinners, and changing art exhibitions, workout room, and BBQ. Residents are eligible to join the printmaking studio Goathead Press, or a woodworking shop in the Mighty Tieton Warehouse next door. A membership pottery studio on the town square is planned for this fall.

Appliances include refrigerator, dishwasher, disposal, microwave, hood and range, ceiling fan, under-counter kitchen lights.

This is a private sale by owner.  
Contact Ed Marquand for further details or to schedule a tour.  
edm@marquand.com 206 321-2982.

Additional photos are posted in sets by property on  
[flickr.com/ed\\_tieton](https://www.flickr.com/photos/ed_tieton/)

# Mighty Tieton Loft #13

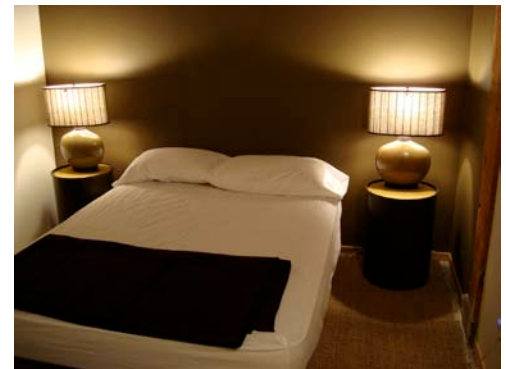


This loft faces south, so it gets plenty of sun all year. The wooden doorway is 19th century Chinese. It creates a sunporch perfect for a small indoor garden and hammock spot.

The ceilings are 14 feet high upstairs and 11 feet downstairs, with the original ceilings and beams exposed.

The downstairs has two small sleeping carells and a bedroom and plenty of storage.

The loft above the kitchen can be a sleeping area, office, or both.



608 Wisconsin Avenue  
Tieton, WA 98947  
Approximately 1440 sq. ft. live/work area  
in two stories  
plus a 200 sq. ft. sleeping loft

**For sale by owner. \$224,500**

Contact Ed Marquand for further details or to schedule a tour.

This is a private sale by owner.  
Contact Ed Marquand for further details or to schedule a tour.

edm@marquand.com 206 321-2982.  
Additional photos are posted in sets by  
property on  
[flickr.com/ed\\_tietoncom/ed\\_tieton](https://www.flickr.com/photos/ed_tietoncom/)

**Tieton Lofts are for creative professionals.** Join the group that has made it their community is smart, resourceful, entrepreneurial, artistic, and imaginative. Most residents use the Lofts as a second home. For others, it's a primary one, within easy commuting distance from Yakima.

Loft residents are the heart of the whole Mighty Tieton enterprise. They include serious recreational enthusiasts who take advantage of nearby skiing, hiking, biking, fishing, kayaking, birding, and kiting. They enjoy proximity to nature without the worry or hassle of a remote cabin or unattended house. Mighty Tieton works with the Nature Conservancy and Cowiche Canyon Conservancy to encourage smart use of local recreational resources.

[mightytieton.com](http://mightytieton.com)



Garden



Shared Gallery and Deck

Designed by Arellano/Christofides Architects from a 1940s apple warehouse and built by local custom-home contractors in 2007, this simple masonry building with high ceilings on two floors features exposed massive beams, and original wood floors on the main level. Developed to respect the aesthetics of the region, this project is smart, original, and responsive to the creative needs of the owners.

Design features include venting skylight, full appliances, custom cabinetry, large state-of-the-art glass doors that open to the garden view, fully wired for data and speakers, wi-fi, and cable. Fire sprinkler system throughout. It's energy efficient. Electric forced air heating. The extra insulation on the roof and in the building itself keeps the voluminous spaces comfortable year around without air conditioning. Softened water. Tiled shower with terrazzo floor. Bosch washer/dryer.

The sleeping loft includes a custom-designed staircase and railing. The downstairs space is one large open room with 11-foot ceilings, with exposed massive timber beams. It can be left open or divided into as many as three bedrooms. Tieton Loft owners have designed their spaces in highly individual ways. Add translucent flooring to bring light from the main floor to the lower level.

Common spaces include a large deck overlooking the garden and orchard, the Gallery space for planned and spontaneous potlucks, holiday dinners, and changing art exhibitions, workout room, and BBQ. Residents are eligible to join the printmaking studio Goathead Press, or a woodworking shop in the Mighty Tieton Warehouse next door. A membership pottery studio on the town square is planned for this fall.

Appliances include refrigerator, dishwasher, disposal, microwave, hood and range, ceiling fan, under-counter kitchen lights.

This is a private sale by owner.  
Contact Ed Marquand for further details or to schedule a tour.  
edm@marquand.com 206 321-2982.  
Additional photos are posted in sets by property on [flickr.com/ed\\_tieton](https://www.flickr.com/photos/ed_tieton/)

[mightytieton.com](http://mightytieton.com)